

ChurchOutlet.com

Model 460

Steeple Data

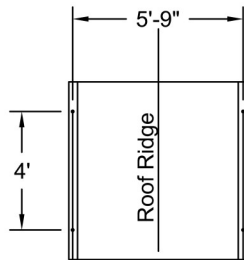
Base Width: 6'-0"
Steeple Height: 33'-8"
Weight: 1225 lbs
Three Piece Steeple Unit

Available Options

- 3' or 4' Aluminum Cross
- 8" Ball
- Round Top Simulated Louvers
- Krinklgas Windows
- Lightning Protection
- Various accessories available for spire and base

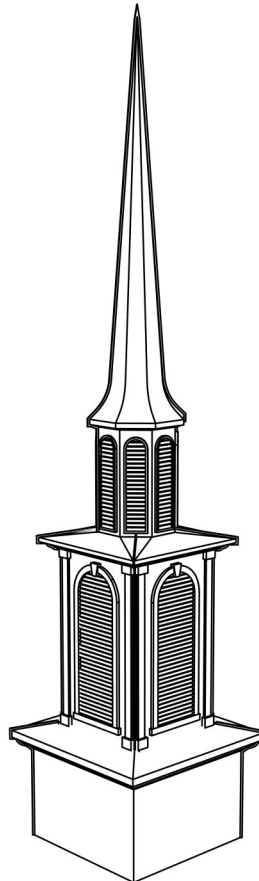
ALL STEEPLES MUST BE MOUNTED ON A COMPLETED WATERPROOF ROOF SYSTEM AS LONG-TERM INSURANCE AGAINST LEAKAGE.

Note: Steeple Tip will be reduced by approx. 14" when Adding Optional Cross

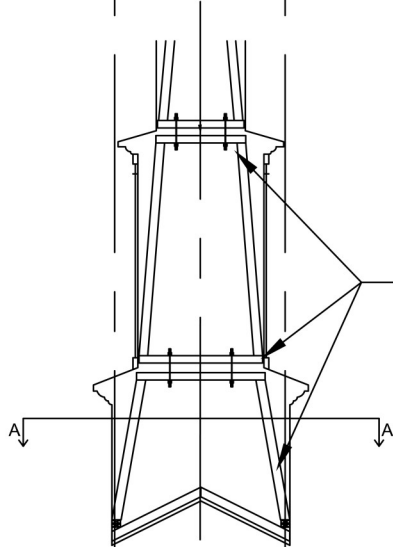


Plan View A-A

Scale: 3/16" = 1'-0"



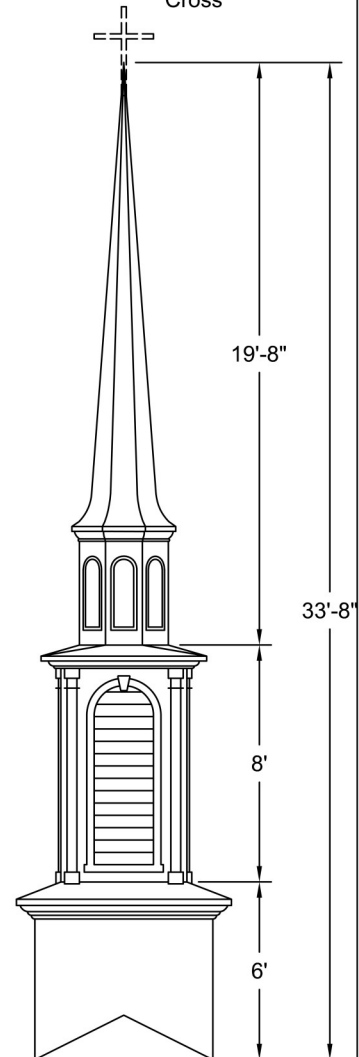
3D-View



Interior Support Detail

Scale: 3/16" = 1'-0"

DOUBLE 2x4 INTERIOR STRUCTURE WITH HEAVY LAMINATE BONDED TO FRP EXTERIOR



ELEVATION

Scale: 3/16" = 1'-0"

Drawings are property of Fiberglass Unlimited, Inc.

Dimensions may change slightly to accommodate manufacturing.

800-736-3113 info@churchoutlet.com