

# ChurchOutlet.com

## Model 400

### Steeple Data

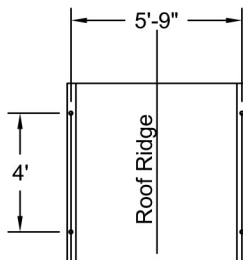
Base Width: 6'-0"  
Steeple Height: 29'  
Weight: 1025 lbs  
Two Piece Steeple Unit

### Available Options

- 3' or 4' Aluminum Cross
- Lightning Protection
- Simulated Louvers
- Krinklgas Windows
- Round Venting Louvers in Base

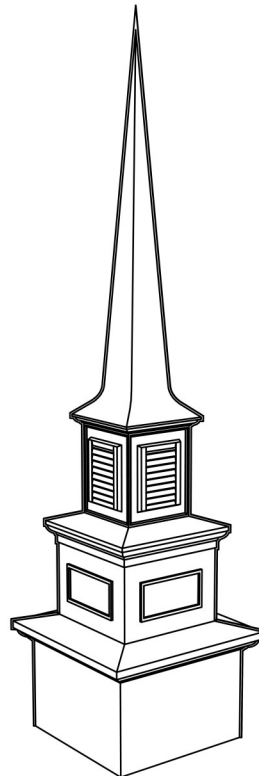
ALL STEEPLES MUST BE MOUNTED ON A COMPLETED WATERPROOF ROOF SYSTEM AS LONG-TERM INSURANCE AGAINST LEAKAGE.

Note: Steeple Tip will be reduced by approx. 14" when Adding Optional Cross

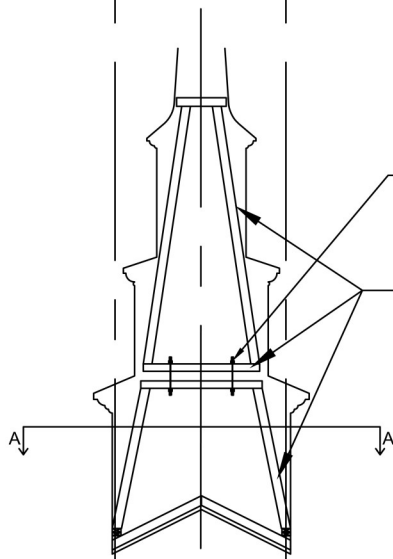


Plan View A-A

Scale: 3/16" = 1'-0"



3D-View

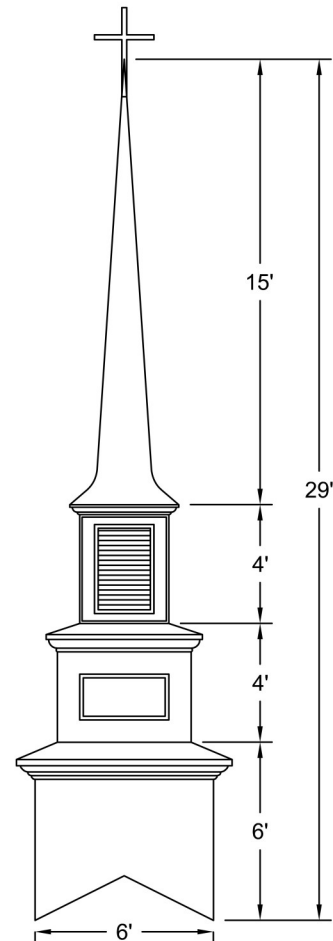


Interior Support Detail

Scale: 3/16" = 1'-0"

$\frac{3}{4}$ " all thread with washers and double nuts

DOUBLE 2x4 INTERIOR STRUCTURE WITH HEAVY LAMINATE BONDED TO FRP EXTERIOR



ELEVATION

Scale: 3/16" = 1'-0"

Drawings are property of Fiberglass Unlimited, Inc.

Dimensions may change slightly to accommodate manufacturing.

**800-736-3113    [info@churchoutlet.com](mailto:info@churchoutlet.com)**