

ChurchOutlet.com

Model 340

Steeple Data

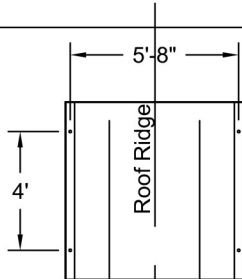
Base Width: 6'
Steeple Height: 24'
Weight: 750 lbs
Two Piece Steeple Unit

Available Options

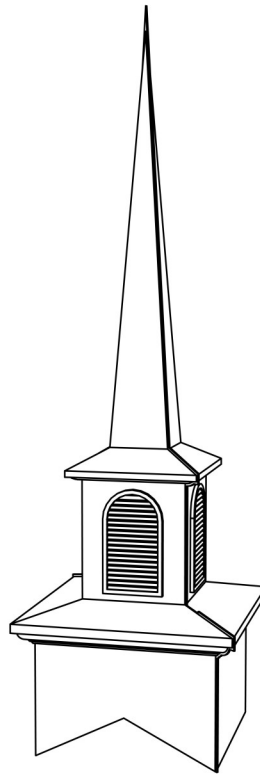
- 3' or 4' Aluminum Cross
- 8" Ball
- Lightning Protection
- Rect. or Round Top:
Simulated Louvers
Vented Louvers
"K"glass Windows
- Round Louvers in Base

ALL STEEPLES MUST BE MOUNTED ON A COMPLETED WATERPROOF ROOF SYSTEM AS LONG-TERM INSURANCE AGAINST LEAKAGE.

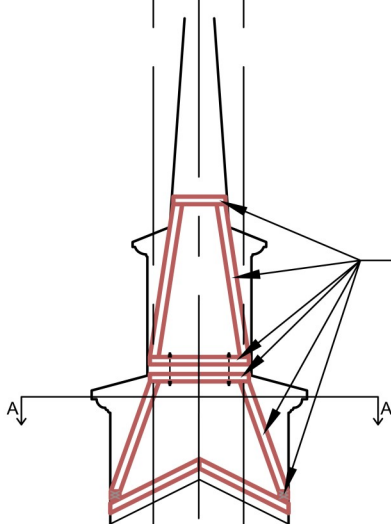
Note: Steeple Tip will be reduced by approx. 14" when Adding Optional Cross



Plan View A-A
Scale: 3/16" = 1'-0"

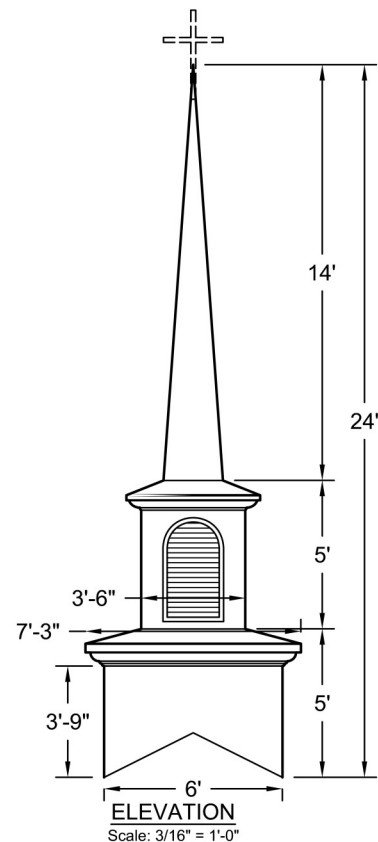


3D-View



Interior Support Detail
Scale: 3/16" = 1'-0"

DOUBLE 2x4 INTERIOR
STRUCTURE WITH
HEAVY LAMINATED
BONDED TO FRP
EXTERIOR



ELEVATION
Scale: 3/16" = 1'-0"

Drawings are property of Fiberglass Unlimited, Inc.

Dimensions may change slightly to accommodate manufacturing.

800-736-3113 info@churchoutlet.com