

# ChurchOutlet.com

## Model 255

### Steeple Data

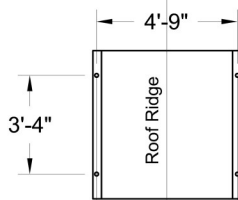
Base Width: 5'  
Steeple Height: 26'  
Weight: 650 lbs

### Available Options

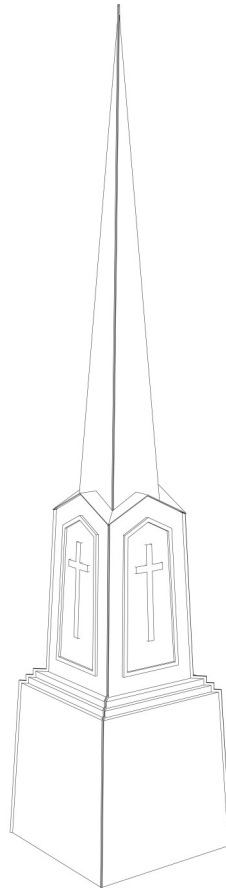
- 3' or 4' Aluminum Cross
- 8" Ball
- Simulated Louvers
- Krinkglas Windows with applied Cross
- Lightning Protection
- Round Louvers in Base

ALL STEEPLES MUST BE MOUNTED ON A COMPLETED WATERPROOF ROOF SYSTEM AS LONG-TERM INSURANCE AGAINST LEAKAGE.

Note: Steeple Tip will be reduced by approx. 14" when Adding Optional Cross



Plan View A-A  
Scale: 3/16" = 1'-0"



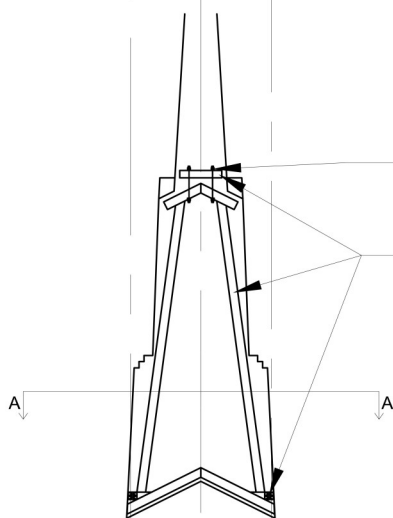
3D-View

ALSO AVAILABLE WITH SIMULATED LOUVERS

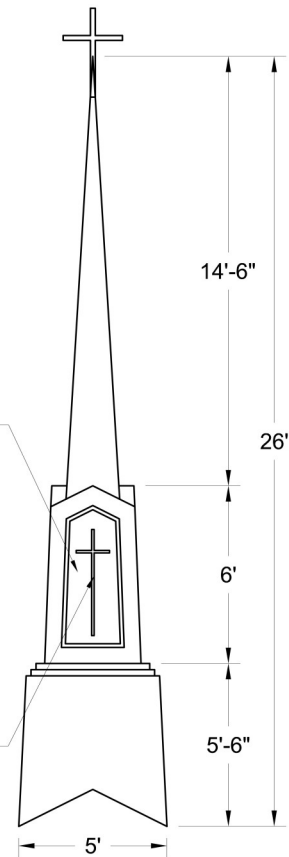
FOUR BOLTS ATTACH SPIRE  
DOUBLE NUTS W/FLAT WASHERS

Double 2x4 INTERIOR  
STRUCTURE WITH  
HEAVY LAMINATE  
BONDED TO FRP  
EXTERIOR

WHITE CROSS  
APPLIED TO KRINKLGLASS



Interior Support Detail  
Scale: 3/16" = 1'-0"



ELEVATION  
Scale: 3/16" = 1'-0"

Drawings are property of Fiberglass Unlimited, Inc.

Dimensions may change slightly to accommodate manufacturing.

800-736-3113 info@churchoutlet.com